



AVOOVA TSITISKAMMA ROUND MIRROR

This mirror has been adorned in cascading jungle flora, inspired by the ancient Tsitsikamma forest fringing the Indian Ocean to the south the Karoo. Much like a work of art, it draws the eye to its bold botanical shapes and pewter accents. All inlaid by hand and each one different to the next.

MATERIALS & CONSTRUCTION

- Ostrich egg shell inlay
- Pewter
- Cement
- Bevelled mirror
- 1x strap hanger

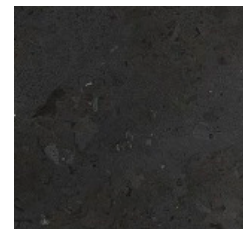
DIMENSIONS

Frame- Dia 35.5"

Glass- Dia 22.5"

DISCLAIMER

AVOOVA products are hand crafted originals. Slight variations in color, size and pattern are intrinsic to the style and character of each piece.



Charcoal



Grey

